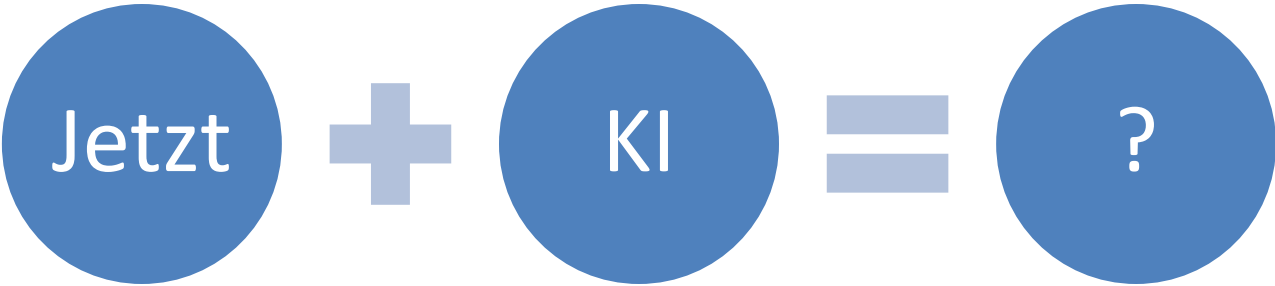
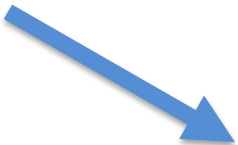
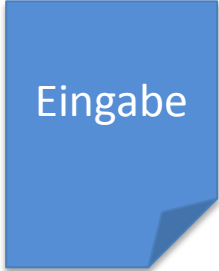


„Move fast and break things*“

Mark Zuckerberg

*Democracy





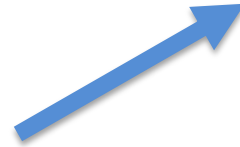
Eingabe

```
graph LR; A[Eingabe] --> B{Hat es Ecken?}; B --> C((Kreis)); B --> D[Rechteck];
```

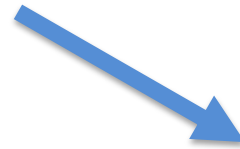
The diagram is a flowchart with a white background. It starts on the left with a blue square icon with a folded bottom-right corner, containing the white text 'Eingabe'. A blue arrow points from this icon to a blue diamond shape containing the white text 'Hat es Ecken?'. From the diamond, two blue arrows branch out: one points up and to the right to a blue circle containing the white text 'Kreis', and the other points down and to the right to a blue square containing the white text 'Rechteck'.



Hat es
Ecken?



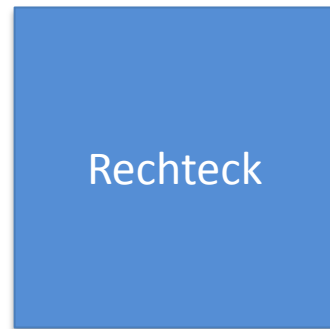
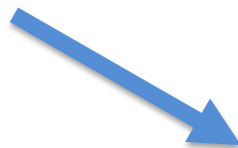
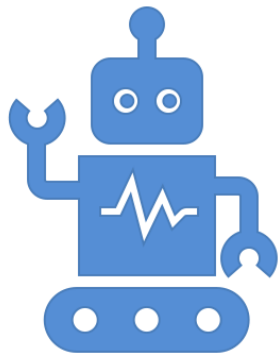
Kreis



Rechteck

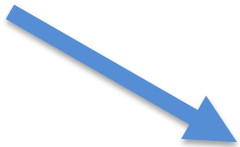
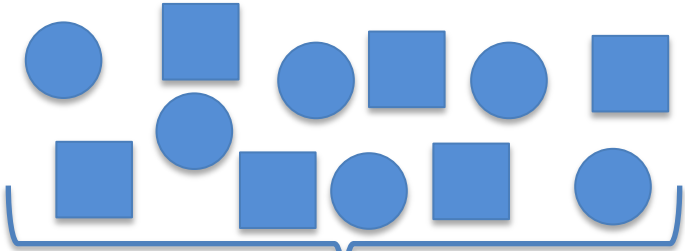
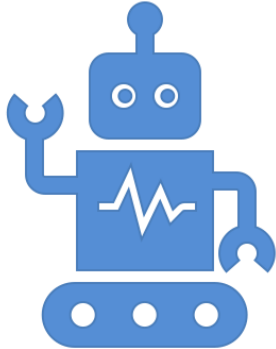








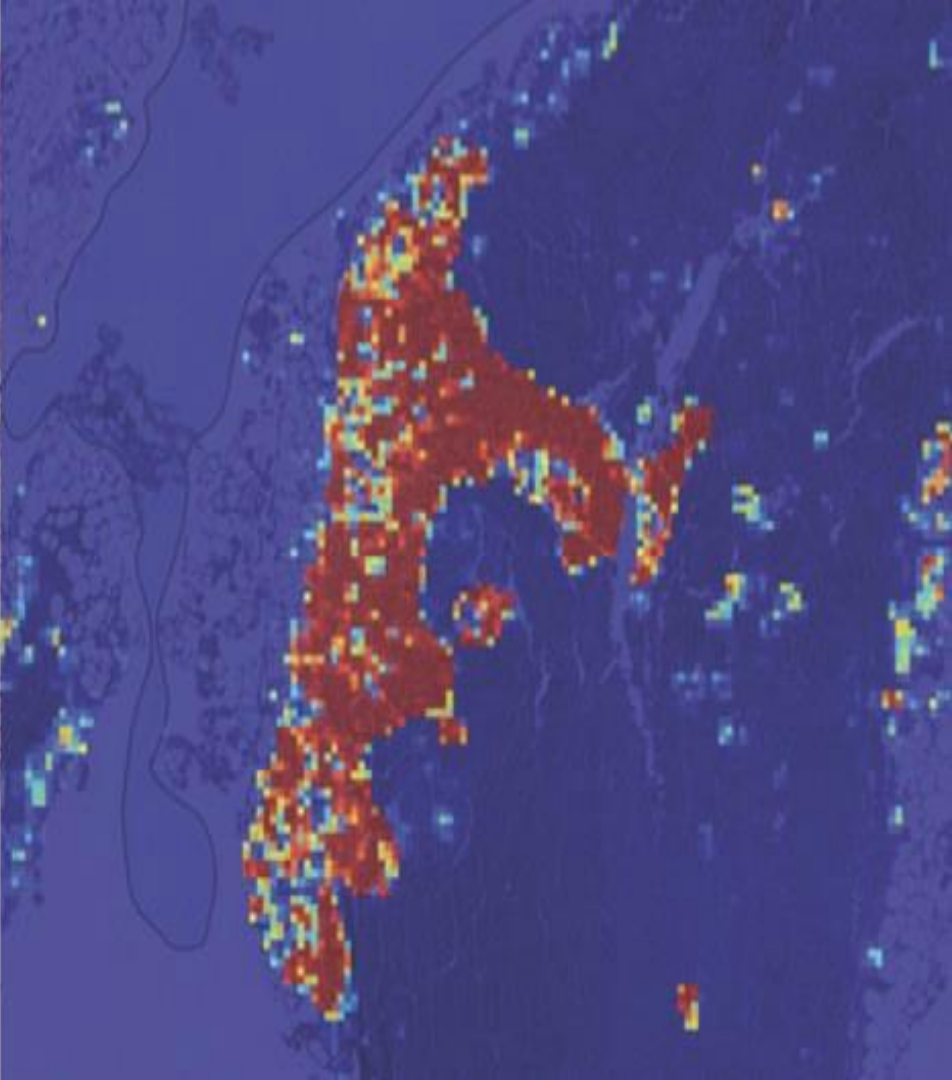
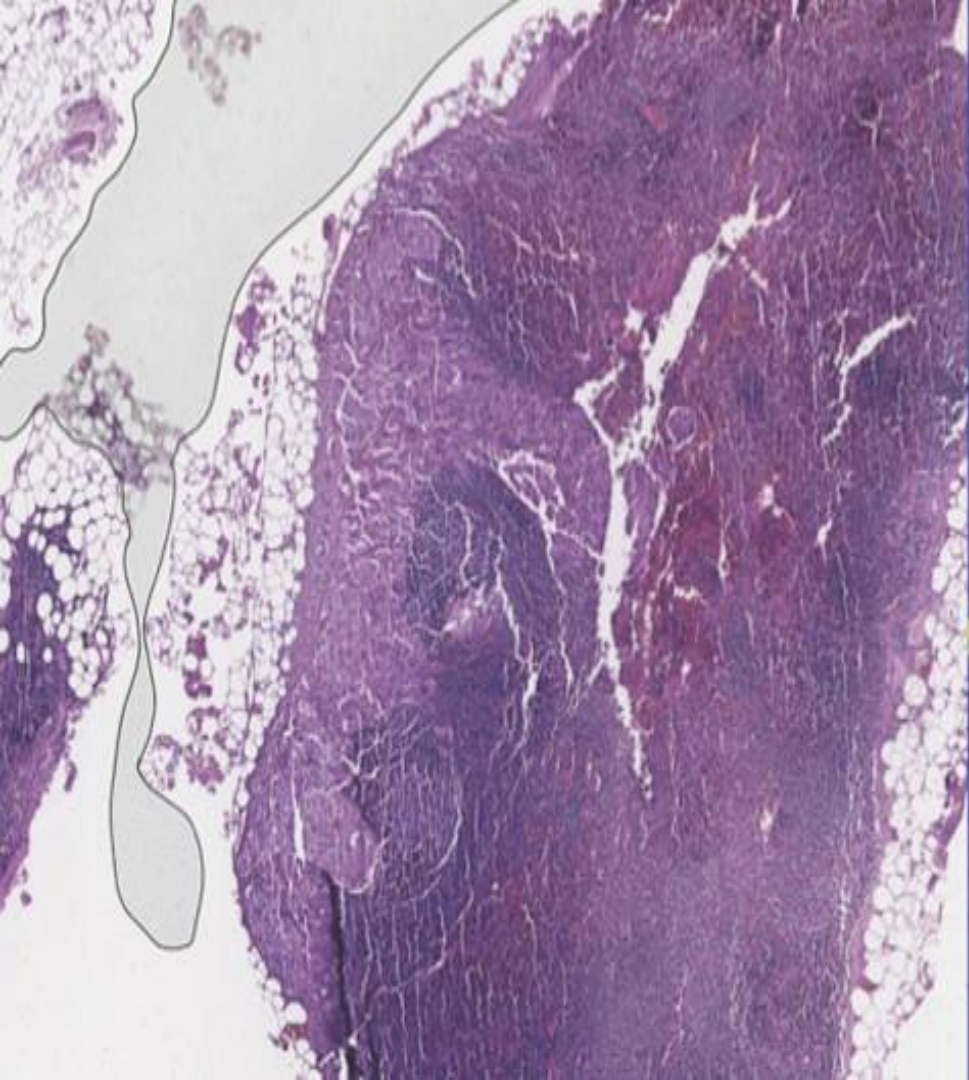
Eingabe











NETFLIX ORIGINAL

STRANGER THINGS

95% Match 2017 2 Seasons 4K Ultra HD 5.1

When a young boy vanishes, a small town uncovers a mystery involving secret experiments, terrifying supernatural forces and one strange little girl.

Winona Ryder, David Harbour, Matthew Modine
TV Shows, TV Sci-Fi & Fantasy, Teen TV Shows

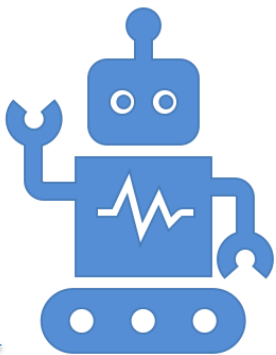
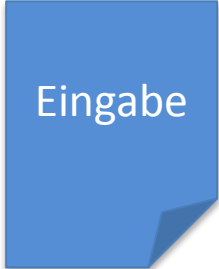
Popular on Netflix



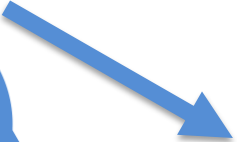
Recently Watched



Besteht diese Aufgabe aus
Wiederholungen und der Anwendung
einfacher Regeln?



VS





Was ist eine gute Tourenplanung?

KI BEI GRAPHMASTERS

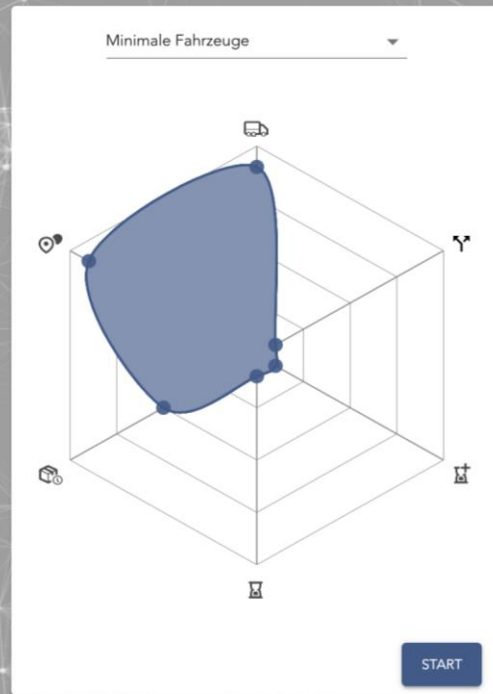
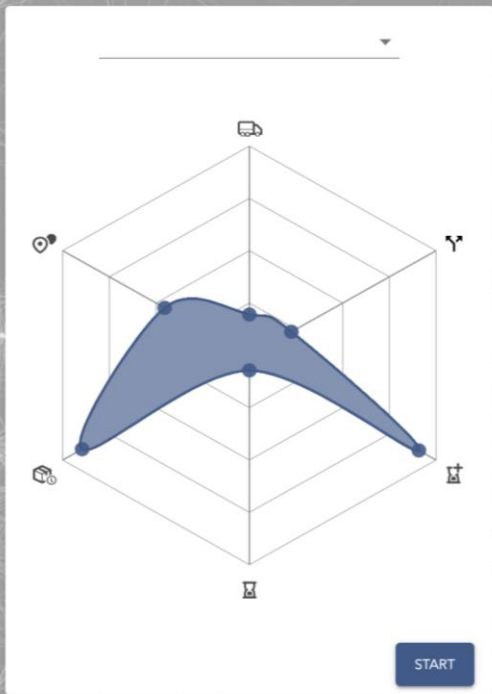
5 Jobs left **OPTIMIZE DEPOT**

- 1 35 19:52
- 2 45 20:35
- 3 44 20:33
- 4 43 20:14
- 5 41 19:22
- 6
- 7 53 18:58
- 8 50 19:03
- 9 27 18:47
- 10 29 19:18



NUNAV Courier – Das Spiel

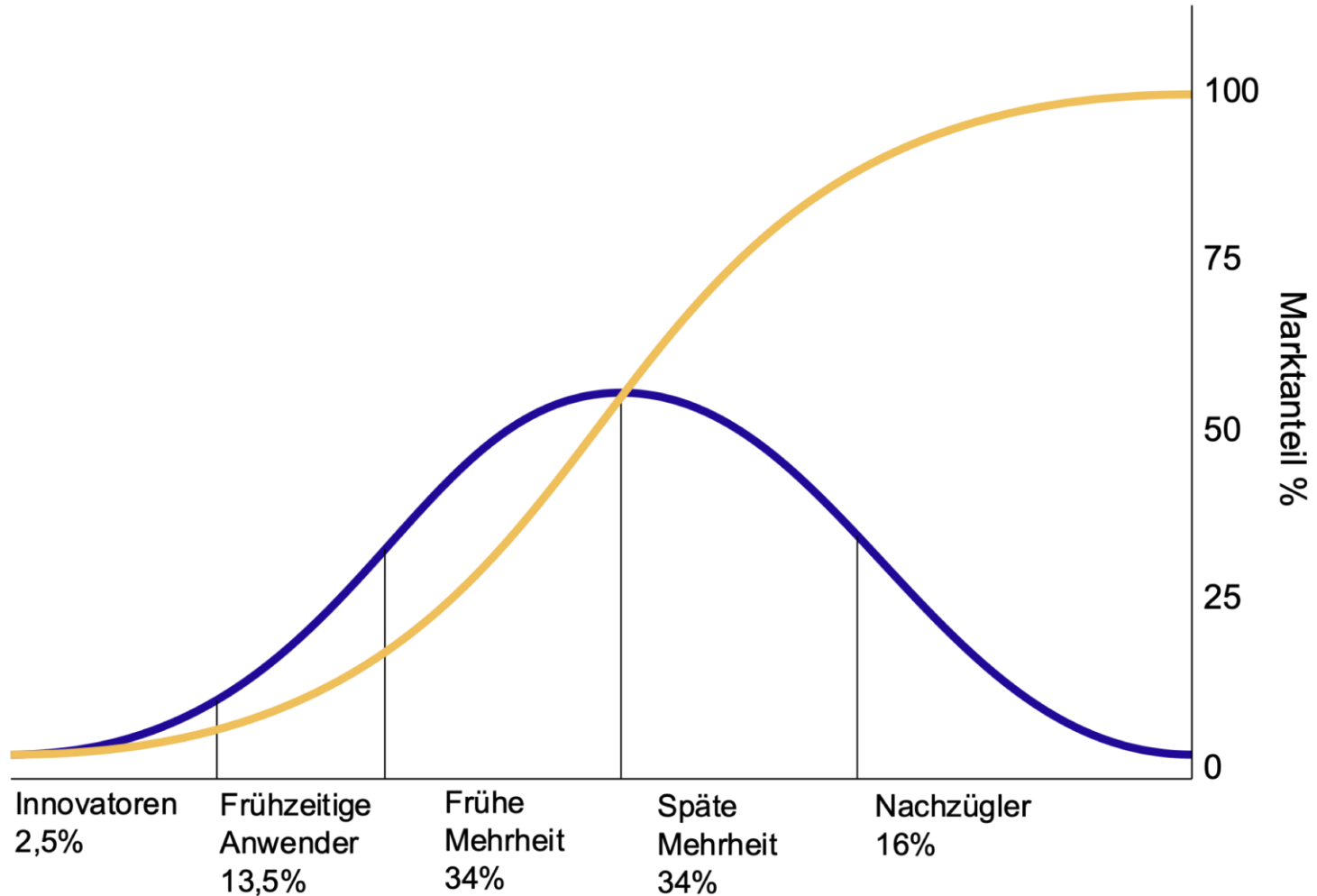




Was brauche ich?

AUTOMATISIERUNG BEI MIR



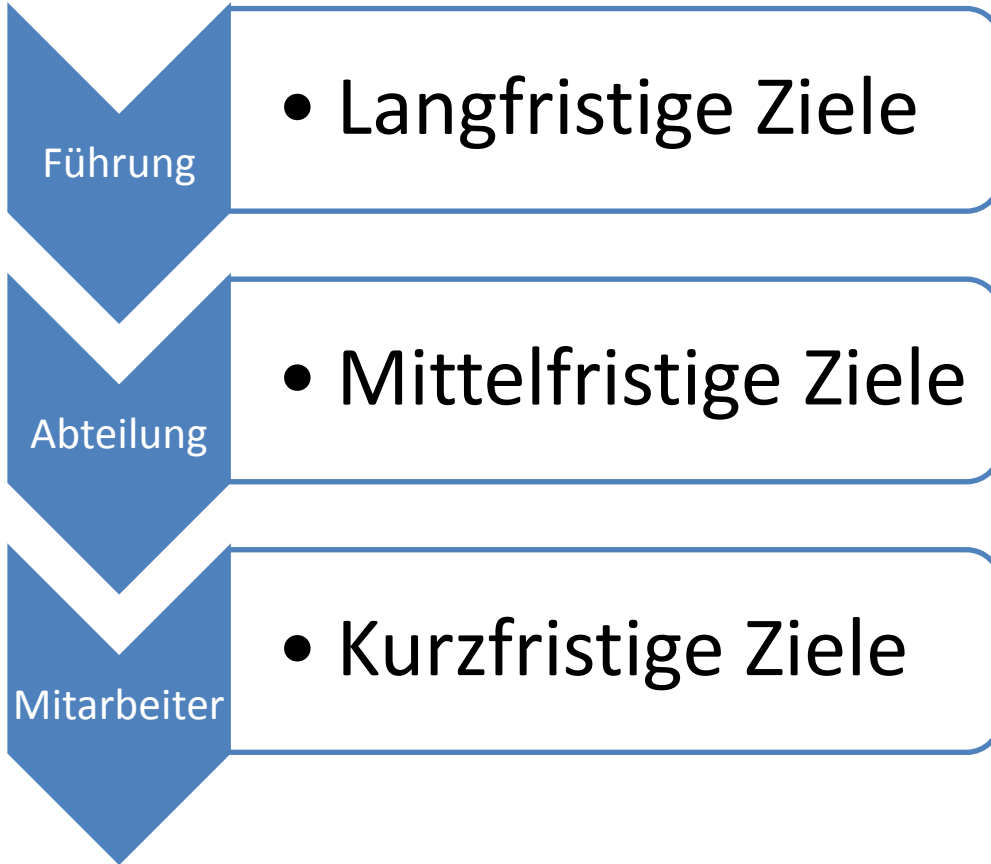


„Man muss den Menschen mitnehmen“

Jeder

„Es geht bei Digitalisierung um Menschen,
nicht um Technik“

Sie, ab heute





NETFLIX

Software ist nie fertig

